

Test Report

No. CANEC0903155808

Date: 20 Jun 2009

Page 1 of 5

SHENZHEN XINHE SILICON MATERIAL CO.,LTD
3/F COLLIGATE BUILDING,LAIWUSHAN VILLAGE,DALANG STREET BAOAN DISTRICT SHENZHEN
CHINA

The following sample(s) was/were submitted and identified on behalf of the clients as :

白色色母

SGS Job No. : 11928108 - SZ
Client Reference Information : XH-1924 XH-1924A
SGS Internal Reference No. : 10.8
Date of Sample Received : 16 Jun 2009
Testing Period : 16 Jun 2009 - 20 Jun 2009

Test Requested : Selected test(s) as requested by client.
Test Method : Please refer to next page(s).
Test Results : Please refer to next page(s).

Signed for and on behalf of
SGS-CSTC Ltd.



Sunny Huang
Lab Sr. Supervisor

This document is issued by the Company under its General Conditions of Service printed overleaf or available on request and accessible at http://www.sgs.com/terms_and_conditions.htm. Attention is drawn to the limitation of liability, indemnification and jurisdiction issues defined therein. Any holder of this document is advised that information contained hereon reflects the Company's findings at the time of its intervention only and within the limits of Client's instructions, if any. The Company's sole responsibility is to its Client and this document does not exonerate parties to a transaction from exercising all their rights and obligations under the transaction documents. Any unauthorized alteration, forgery or falsification of the content or appearance of this document is unlawful and offenders may be prosecuted to the fullest extent of the law. Unless otherwise stated the results shown in this test report refer only to the sample(s) tested. This document cannot be reproduced except in full, without prior approval of the Company.

Test Report

No. CANEC0903155808

Date: 20 Jun 2009

Page 2 of 5

Test Results:

ID for specimen 1 : CAN09-031558.008
 Description for specimen 1 : White soft material

SS - 00259

Test Item(s)	Unit	Test Method (Reference)	Result	MDL
Cadmium (Cd)	mg/kg	IEC 62321:2008, ICP-OES	N.D.	2
Lead (Pb)	mg/kg	IEC 62321:2008, ICP-OES	N.D.	2
Mercury (Hg)	mg/kg	IEC 62321:2008, ICP-OES	N.D.	2
Hexavalent Chromium (CrVI) by alkaline extraction	mg/kg	IEC 62321:2008, UV-Vis	N.D.	2
Sum of PBBs	mg/kg	-	N.D.	-
Monobromobiphenyl	mg/kg	IEC 62321:2008, GC-MS	N.D.	5
Dibromobiphenyl	mg/kg	IEC 62321:2008, GC-MS	N.D.	5
Tribromobiphenyl	mg/kg	IEC 62321:2008, GC-MS	N.D.	5
Tetrabromobiphenyl	mg/kg	IEC 62321:2008, GC-MS	N.D.	5
Pentabromobiphenyl	mg/kg	IEC 62321:2008, GC-MS	N.D.	5
Hexabromobiphenyl	mg/kg	IEC 62321:2008, GC-MS	N.D.	5
Heptabromobiphenyl	mg/kg	IEC 62321:2008, GC-MS	N.D.	5
Octabromobiphenyl	mg/kg	IEC 62321:2008, GC-MS	N.D.	5
Nonabromobiphenyl	mg/kg	IEC 62321:2008, GC-MS	N.D.	5
Decabromobiphenyl	mg/kg	IEC 62321:2008, GC-MS	N.D.	5
Sum of PBDEs	mg/kg	-	N.D.	-
Monobromodiphenyl ether	mg/kg	IEC 62321:2008, GC-MS	N.D.	5
Dibromodiphenyl ether	mg/kg	IEC 62321:2008, GC-MS	N.D.	5
Tribromodiphenyl ether	mg/kg	IEC 62321:2008, GC-MS	N.D.	5
Tetrabromodiphenyl ether	mg/kg	IEC 62321:2008, GC-MS	N.D.	5
Pentabromodiphenyl ether	mg/kg	IEC 62321:2008, GC-MS	N.D.	5
Hexabromodiphenyl ether	mg/kg	IEC 62321:2008, GC-MS	N.D.	5
Heptabromodiphenyl ether	mg/kg	IEC 62321:2008, GC-MS	N.D.	5
Octabromodiphenyl ether	mg/kg	IEC 62321:2008, GC-MS	N.D.	5
Nonabromodiphenyl ether	mg/kg	IEC 62321:2008, GC-MS	N.D.	5
Decabromodiphenyl ether ##	mg/kg	IEC 62321:2008, GC-MS	N.D.	5

Note:

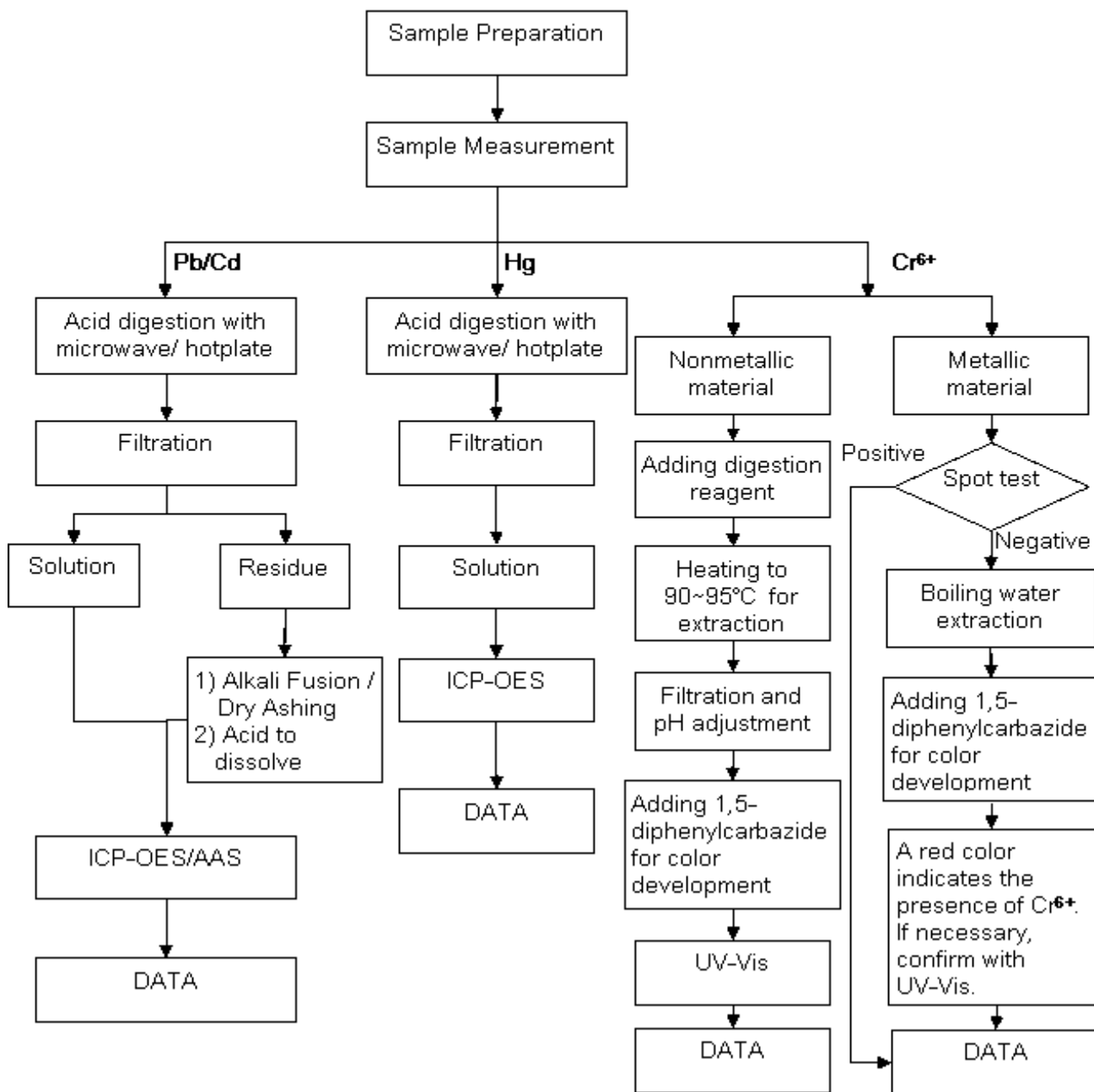
1. mg/kg = ppm
2. N.D. = Not Detected (< MDL)
3. MDL = Method Detection Limit
4. ## = The exemption of DecaBDE in polymeric application according 2005/717/EC was overruled by the European Court of Justice by its decision of 01.04.2008. Subsequently DecaBDE is included in the sum of PBDE after 01.07.2008
5. "-" = Not regulated

This document is issued by the Company under its General Conditions of Service printed overleaf or available on request and accessible at http://www.sgs.com/terms_and_conditions.htm. Attention is drawn to the limitation of liability, indemnification and jurisdiction issues defined therein. Any holder of this document is advised that information contained hereon reflects the Company's findings at the time of its intervention only and within the limits of Client's instructions, if any. The Company's sole responsibility is to its Client and this document does not exonerate parties to a transaction from exercising all their rights and obligations under the transaction documents. Any unauthorized alteration, forgery or falsification of the content or appearance of this document is unlawful and offenders may be prosecuted to the fullest extent of the law. Unless otherwise stated the results shown in this test report refer only to the sample(s) tested. This document cannot be reproduced except in full, without prior approval of the Company.

ATTACHMENTS

Testing Flow Chart

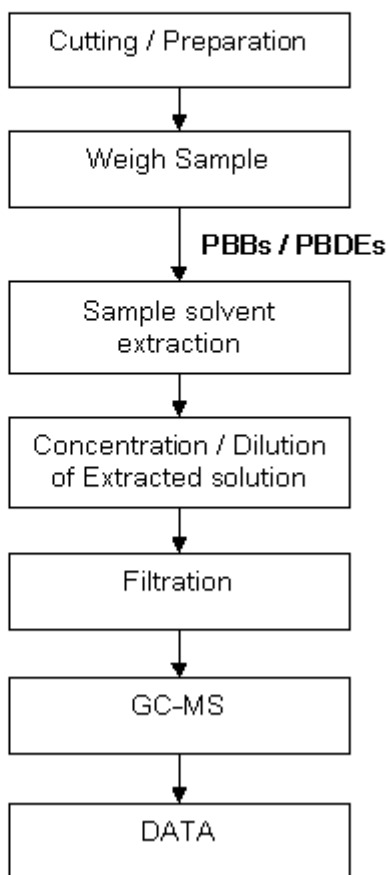
- 1) Name of the person who made measurement: Luke Xu / Lily Lee
- 2) Name of the person in charge of measurement: Adams Yu / Leo Wang
- 3) These samples were dissolved totally by pre-conditioning method according to below flow chart (Cr⁶⁺ test method excluded).



This document is issued by the Company under its General Conditions of Service printed overleaf or available on request and accessible at http://www.sgs.com/terms_and_conditions.htm. Attention is drawn to the limitation of liability, indemnification and jurisdiction issues defined therein. Any holder of this document is advised that information contained hereon reflects the Company's findings at the time of its intervention only and within the limits of Client's instructions, if any. The Company's sole responsibility is to its Client and this document does not exonerate parties to a transaction from exercising all their rights and obligations under the transaction documents. Any unauthorized alteration, forgery or falsification of the content or appearance of this document is unlawful and offenders may be prosecuted to the fullest extent of the law. Unless otherwise stated the results shown in this test report refer only to the sample(s) tested. This document cannot be reproduced except in full, without prior approval of the Company.

Testing Flow Chart

- 1) Name of the person who made measurement: Lina Tang
- 2) Name of the person in charge of measurement: Tina Zhao



This document is issued by the Company under its General Conditions of Service printed overleaf or available on request and accessible at http://www.sgs.com/terms_and_conditions.htm. Attention is drawn to the limitation of liability, indemnification and jurisdiction issues defined therein. Any holder of this document is advised that information contained hereon reflects the Company's findings at the time of its intervention only and within the limits of Client's instructions, if any. The Company's sole responsibility is to its Client and this document does not exonerate parties to a transaction from exercising all their rights and obligations under the transaction documents. Any unauthorized alteration, forgery or falsification of the content or appearance of this document is unlawful and offenders may be prosecuted to the fullest extent of the law. Unless otherwise stated the results shown in this test report refer only to the sample(s) tested. This document cannot be reproduced except in full, without prior approval of the Company.

Sample photo:



SGS authenticate the photo on original report only

*** End of Report ***

This document is issued by the Company under its General Conditions of Service printed overleaf or available on request and accessible at http://www.sgs.com/terms_and_conditions.htm. Attention is drawn to the limitation of liability, indemnification and jurisdiction issues defined therein. Any holder of this document is advised that information contained hereon reflects the Company's findings at the time of its intervention only and within the limits of Client's instructions, if any. The Company's sole responsibility is to its Client and this document does not exonerate parties to a transaction from exercising all their rights and obligations under the transaction documents. Any unauthorized alteration, forgery or falsification of the content or appearance of this document is unlawful and offenders may be prosecuted to the fullest extent of the law. Unless otherwise stated the results shown in this test report refer only to the sample(s) tested. This document cannot be reproduced except in full, without prior approval of the Company.